

SonoScape



INTELLIGENCE EMPOWERS MORE

S60

Color Doppler Diagnostic Ultrasound System

SonoScape

SonoScape Medical Corp.
2F, 12th Building, Shenzhen Software Park Phase II, Keji Middle
2nd Road, Shenzhen, China
Tel: +86-755-26722890 Fax: +86-755-26722850
Email: market@sonoscape.net www.sonoscape.com
CH-U-S60-210285xP16-20190401



Distribuidor Exclusivo
www.aplimed.com.ar - info@aplimed.com
(011) - 4761-1089





Wis⁺

An Artificial Intelligence Based Ultrasound Platform

Wis⁺ is the latest innovative ultrasound platform using deep-learning based algorithms. It adopts programs known as Convolutional Neural Networks to replicate the way of human brain, analyzes visual images in order to learn and evolve, developing and enhancing its ability to recognize and analyze tissue structures and lesion characteristics. Therefore, it helps ultrasound professionals acquire and interpret ultrasound images efficiently and precisely.

S60, the SonoScape's premium system based on Wis⁺ platform, empowers care providers to have quality ultrasound practice with quicker answers, more accuracy and higher quality.



Patient Big Database



Expertise

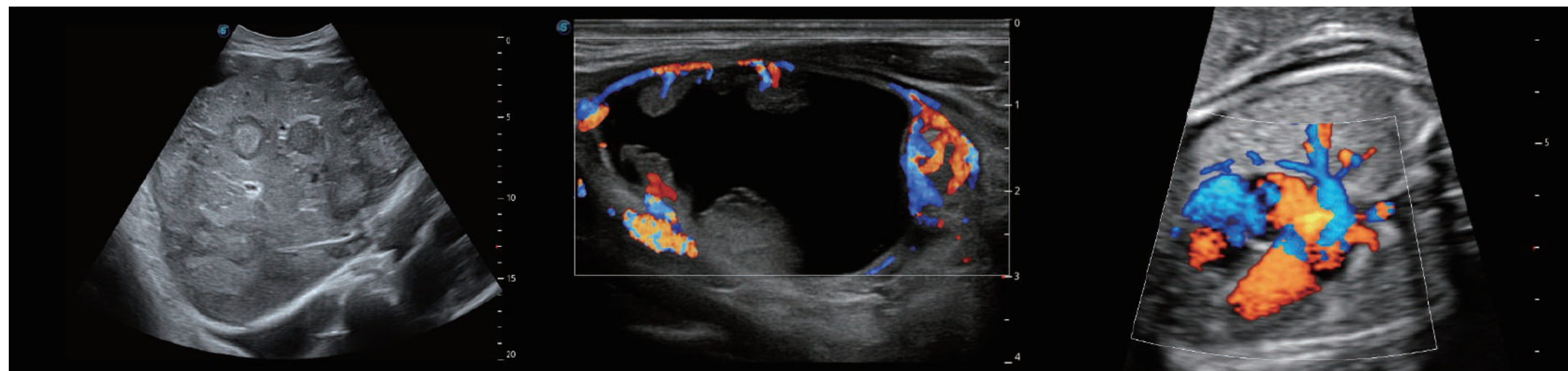


Deep Learning

New Premium Transducers

Achieve New Level of Clarity And Utility

Transducer design, quality of materials and manufacturing technology drive image quality. The scan converters, post processing algorithms and incorporated technologies of the new series premium transducers on S60 have been optimized to deliver greater clarity, color and contrast supporting your diagnostic imaging challenges. Moreover, the compact and lightweight design ensure a natural alignment between the hand and wrist, making daily scanning more comfortable.



Innovative Single Crystal Probe



New Generation Composite Crystal Linear Probe



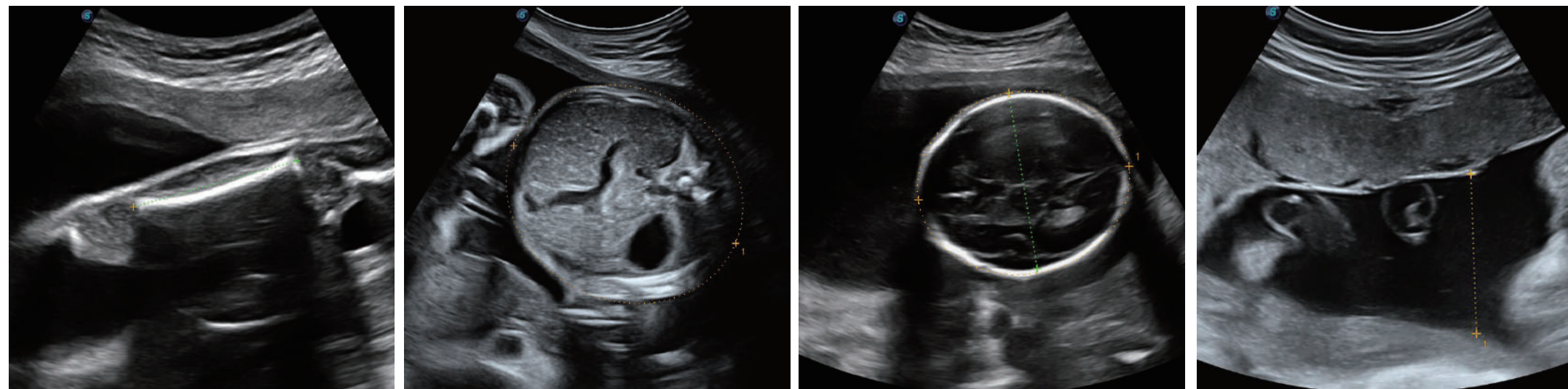
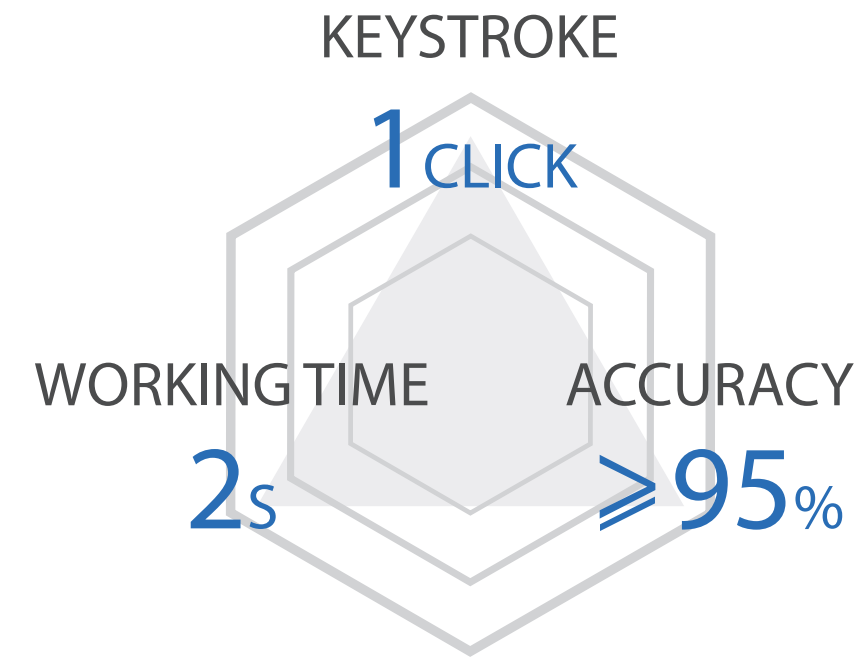
Crafted Volumetric Abdominal Probe



S-Fetus

Automates Obstetric Ultrasound Work-Flow

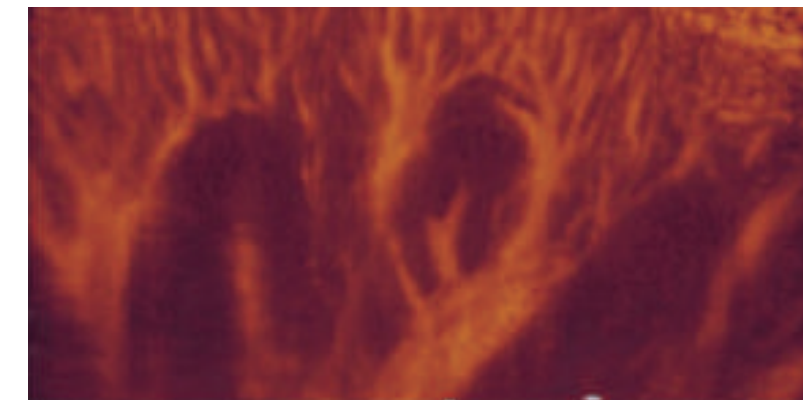
S-Fetus algorithm has been designed to simplify a standard obstetric ultrasound procedure by reducing it to just scanning the patient for a cine loop and pressing a touch screen button, without the need to navigate through menus or press different buttons. It simply selects the best section image and automatically performs the various measurements required to monitor fetus growth and development, transforming obstetric ultrasound exams into an easier, faster, more consistent and far more accurate experience.



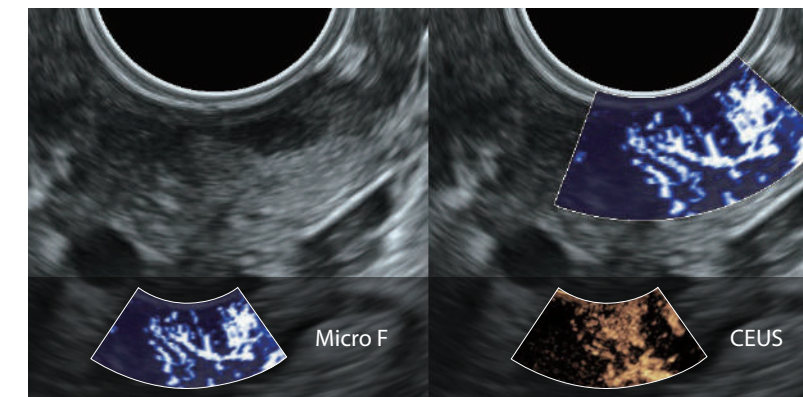
Micro F

Enhances Vision for Blood Flow Dynamics

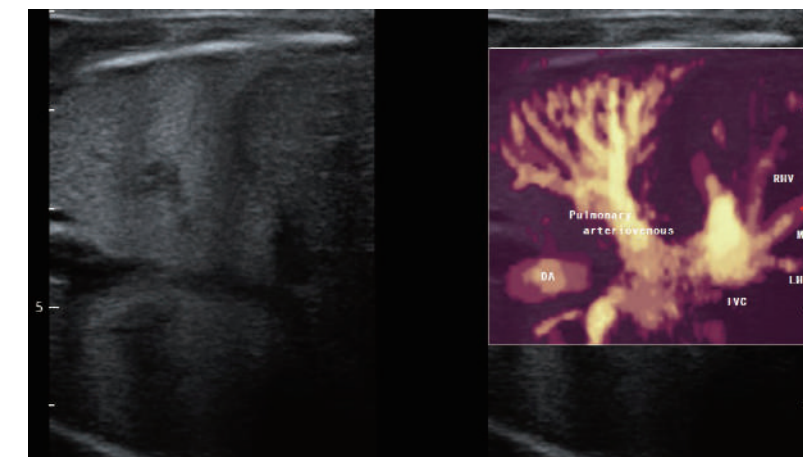
To expand the range of visible flow in ultrasound specially for imaging very low flow states, S60 is now equipped with a brand-new technology Micro F. It is a novel ultrasound Doppler technique employing a unique algorithm that allows minute vessels visualization and slow flow detection but without having to use a contrast agent, enabling advanced hemodynamic evaluation with higher sensitivity, higher spatial resolution and minimal motion artifact.



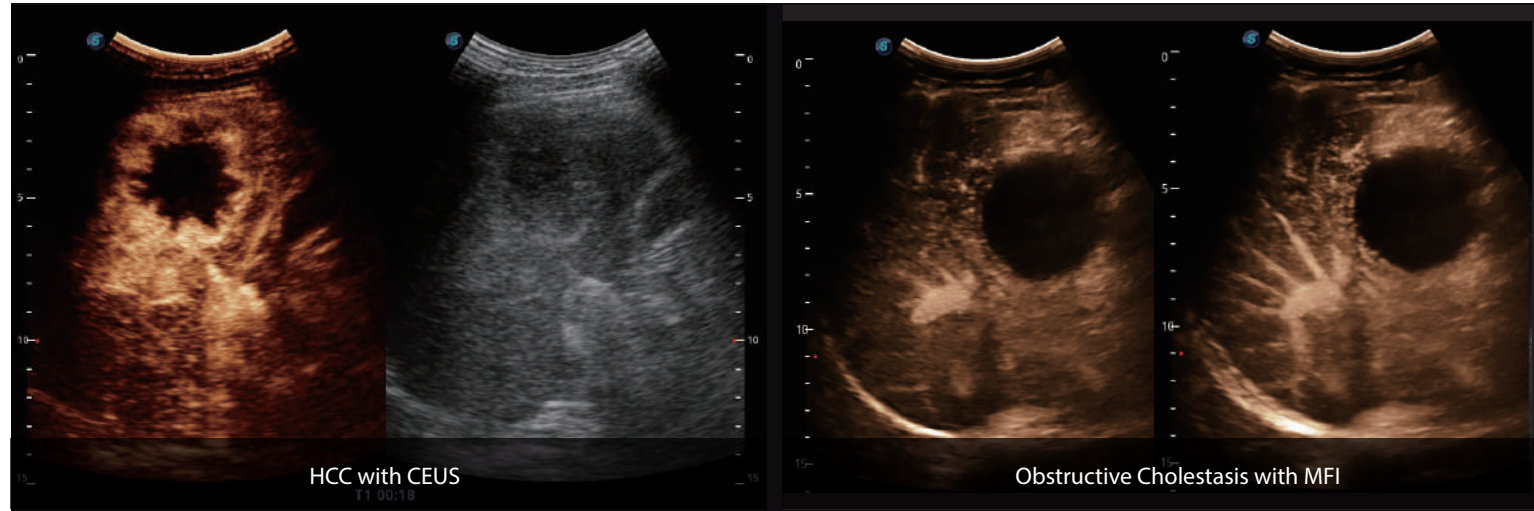
Renal Flow with Micro F



Cervical Poorly Differentiated Carcinoma with Micro F



Fetal Pulmonary Arteriovenous Flow with Micro F

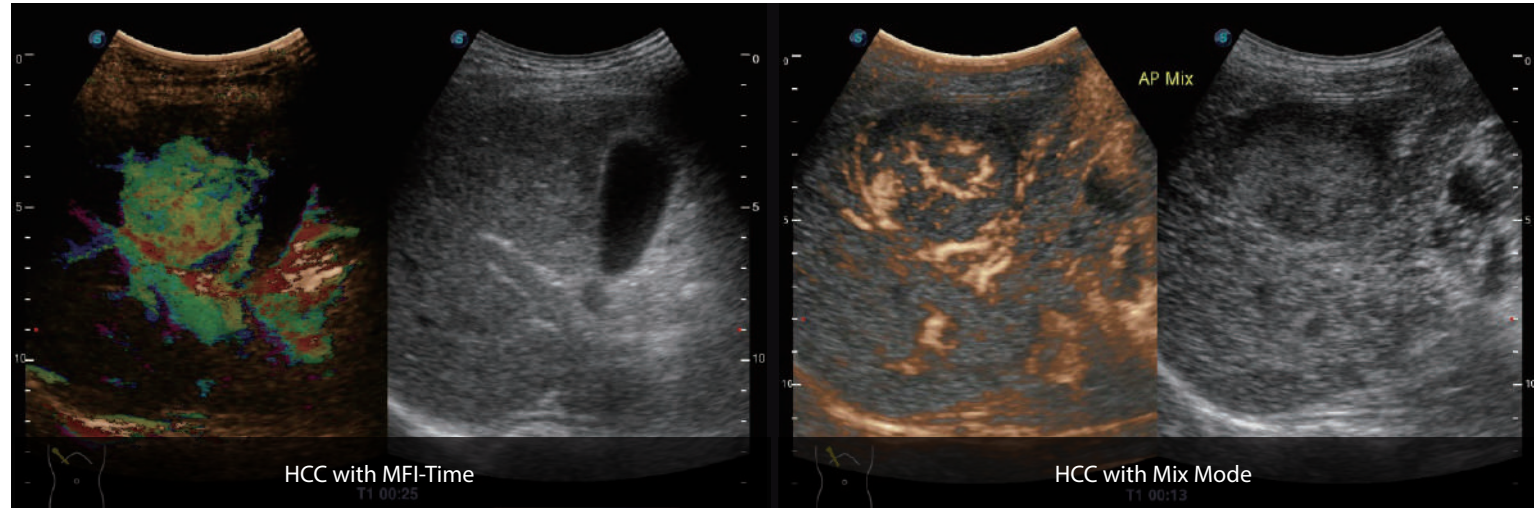


HCC with CEUS
T1 00:18

Optimized Signal Filter Processing Technology makes full use of the non-linear signals and second harmonic signals to improve the image resolution and penetration.

Obstructive Cholestasis with MFI

Micro Flow Imaging automatically accumulates uptake of contrast agent and helps you trace small bubble populations, even in very low-perfused and peripheral areas.



HCC with MFI-Time
T1 00:25

MFI-Time helps to visualize both vascularization and perfusion intuitively by color coding the arrival times of contrast agents on different phases.

HCC with Mix Mode
T1 00:13

Mix Mode offers an overlapped display of the contrast enhanced image together with the fundamental B mode image to help doctors better locate target lesion correctly.



Contrast-Enhanced Ultrasound

Performance That's Clear to See

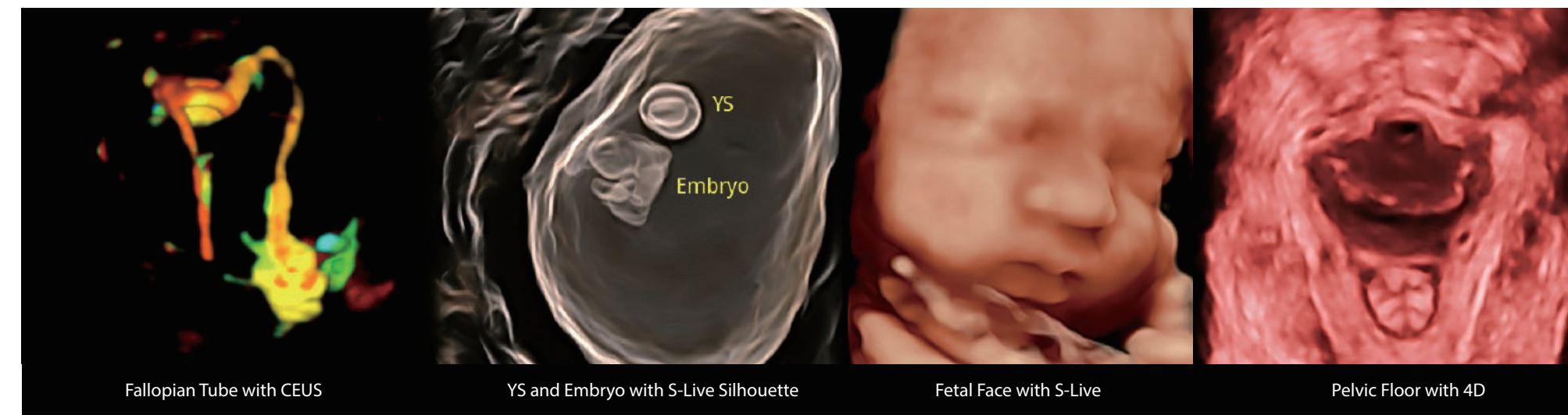
The comprehensive contrast-enhanced ultrasound imaging and quantification package allows doctors to assess perfusion dynamics in a wide range of clinical setting. The unique Dynamic Acoustic Control technology effectively controls the acoustic pressure of the contrast agent, guarantying longer contrast agent duration and better lesion perfusion of delayed phase observation.



Smart 3D/4D

Made Easy and Efficient

The new high density volume rendering engine of S60 significantly optimizes signal processing and 3D rendering, making outstanding volumetric performance outshines others in terms of high volume rates, exceptional details, and realistic effect. The comprehensive volume imaging suite extends your diagnostic capabilities into the next dimension of imaging with extraordinary image quality and streamlined workflow.







Inspired Design

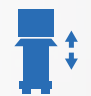
Ensures An Improved User Experience

The design of S60 took operational use into consideration, creating a comfortable diagnosing environment. Ergonomic design, excellent man-machine interaction and rapid response ensure S60 a better user experience, bringing improved efficiency and helping to prevent fatigue from multiple examinations.


 User Authorization Management


 Sono-help Tutorials

 Gel Warmer

 Height Adjustment

 13.3" Quick Responsive Touch Screen

 Bluetooth Remote Control

 Wireless Wi-Fi Connection

Sono-Synch

Facilitates On-Line Education And Live Telemedicine

Sono-Synch is an optional accessory designed primarily to facilitate telemedicine and distance ultrasound education by using an adjustable HD camera to stream and record high-quality videos on the S60 for on-line training and live telemedicine.

