

ISO 13485



Company profile

SonoScape is committed to supplying healthcare-providers worldwide with innovative technology, reliable equipment and customer-oriented services.

SonoScape products include ultrasound, ECG and other essential medical equipment. By introducing more advanced imaging techniques, SonoScape's products have improved diagnostic accuracy and therefore enabled better health outcomes.

Consistently improving Technologies and Services to help deliver better patient cares, SonoScape's passion for Innovation makes it a natural fit for today's market and the choice for tomorrow!

Quote from the analyst of FROST & SULLIVAN

"SonoScape Co. Ltd. has exhibited exceptional entrepreneurial capabilities in developing S8 - the portable colour Doppler System. The advanced 4D capabilities of the ultrasound unit are customised for the high-end European market and yet available at much affordable prices. The company's priority in maintaining high levels of quality in its product lines is well supported by the negligible after-sales costs associated with its ultrasound systems. Also with the launch of SSI-1000, the hand carried ultrasound with multiple clinical applications; SonoScape has made significant strides towards establishing itself as a global medical equipment manufacturer."

Mr.Krishanu Bhattacharjee

Company Milestone

- 2002: Company Founded in Shenzhen, China
- 2003: Released SSI-1000: the 1st 15" Portable Color Doppler system in China
- 2004: Released SSI-2000: the 1st PC platform Color Doppler system in China
- 2005: Received the "High Technology Company" award from the government
- 2007: Received "CHINA TOP BRAND" in the Medical Equipment Industry
- 2007: Released the 1st Real time 4D ultrasound system in China
- 2008: Received "European Entrepreneurial Company 2008" from FROST & SULLIVAN
- 2008: Received "Flagship Company" in the Medical Equipment Industry in China
- 2009: Received "Product Quality Leadership Award 2009" from FROST & SULLIVAN in London, UK
- 2011: Received the Reddot Product Design Award for S20 in Essen, Germany

SonoScape

Yizhe Building, Yuquan Road, Shenzhen, 518051, China
Tel: 86-755-26722890 Fax: 86-755-26722850
E-mail: sonoscape@sonoscape.net www.sonoscape.com

S6V

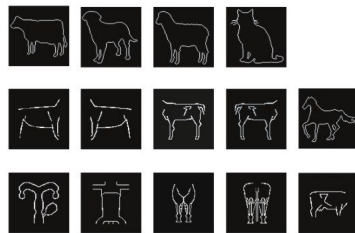
Full Function Veterinary
HCU Without Compromise



SonoScape
Caring for Life through Innovation



S6V is a portable color Doppler system designed to meet the needs of veterinary applications. This system supports diagnosis and measurement in Animal Reproduction, Cardiology, Abdomen, and Superficial organs. Besides, this system features user-friendly ergonomic designs, powerful workflow and professional veterinary packages. For ergonomic designs, S6V configures with built-in Li-ion battery, slim trolley and abundant interfaces, like USB2.0, DICOM3.0 etc. The veterinaries will be more confident for daily practicing with the professional veterinary software packages, specialized examination modes and bodymarks, expert veterinary transducers.



Professional Design for Veterinary Use

- ◇ More than 50 kinds of specialized veterinary body marks
- ◇ User-definable veterinary exam modes applicable for small and large animal
- ◇ Professional veterinary endo-cavity probe for reproductive and superficial application
- ◇ Phased array and micro-convex transducer for abdominal and cardiac application
- ◇ Powerful veterinary measurement packages, such as cardiac, obstetrics, etc.



Main Features

- ◇ 15-inch LCD monitor
- ◇ Standard two transducer sockets
- ◇ CFM, PDI, PW, HPRF, CW, Color M mode
- ◇ ECG module
- ◇ Tissue Harmonic Imaging, Multiple frequency
- ◇ Compound Imaging
- ◇ Trapezoid Imaging
- ◇ One button optimization (M-Tuning)
- ◇ DICOM 3.0 USB port, VGA, S-video
- ◇ Professional VET transducers: Endo-cavity linear, high frequency phased array and High/Low frequency Micro-convex

Outstanding Ergonomic Design

- ◇ Special design suit case for outfield transportation
- ◇ High capacity, built-in Li-ion battery with one hour continuous scanning
- ◇ 2 transducer sockets compatible with most Color Doppler transducers of SonoScape



Canine four Chamber View



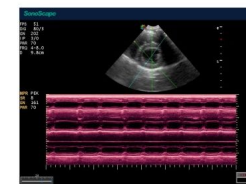
Canine Liver



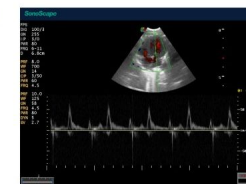
Canine Kidney



Feline AO



Canine Steer M



Feline MV